

WWII Veterans continued from page 1

It is always amazing how the railroad tracks along north Manning were such a magnet to people. I have hundreds of old pictures from various families who had pictures taken on those old Milwaukee tracks.

I even have pictures of some of the school students climbing on the lower steel bridge structure of the Milwaukee RR.

Remember that back then and up until the 1960s, passenger trains roared through Manning on the double tracks through town. The Hiawatha raced through Manning at speeds of nearly 100 MPH.

The last passenger trains through Manning ended in 1965.



Frances Horman & Frank Vollmer on the Milwaukee RR Trestle



Frank Vollmer standing on the Milwaukee tracks



Unknown - possibly a Vollmer



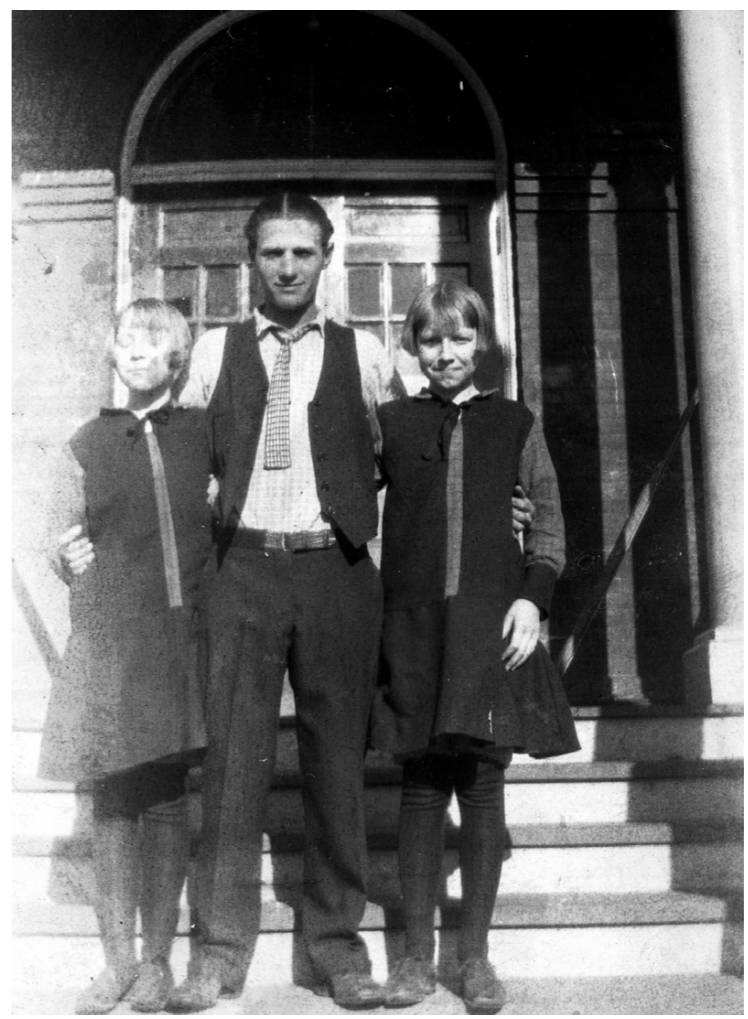
Monsignor Edward Vollmer



Clara Vollmer holding Jeanne Kuhl in front of Zerwas Phone Co.



Dolly Vollmer



Charles Vollmer with his two daughters



Maxine Kuhl & Carolyn Vollmer



Grandma Mary Vollmer holding Donna Rowedder



1956 Junior senior banquet Judy Hugg & Barbara Vollmer (right)



Judy Vollmer class of 1955



Franklin Vollmer & Don Owen - you can see the old East Street bridge over the Milwaukee RR tracks in the back right.



Paul Vollmer 1954 Manning Fire Department

WWII continued next week with Volquartsen.